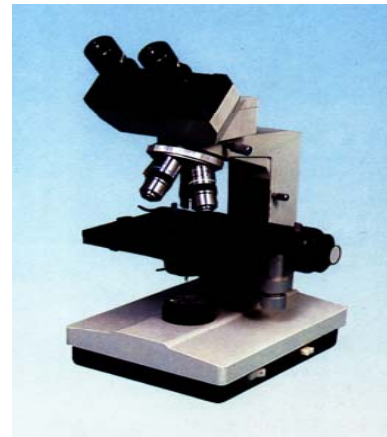
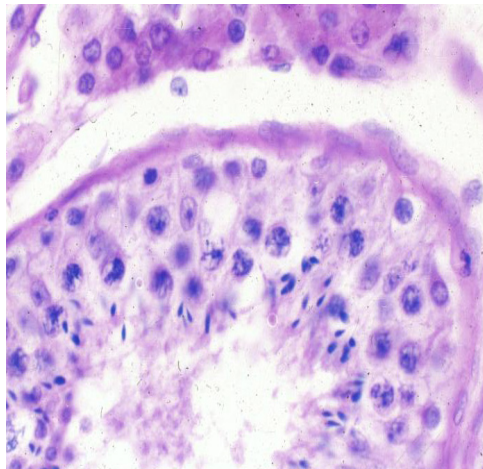
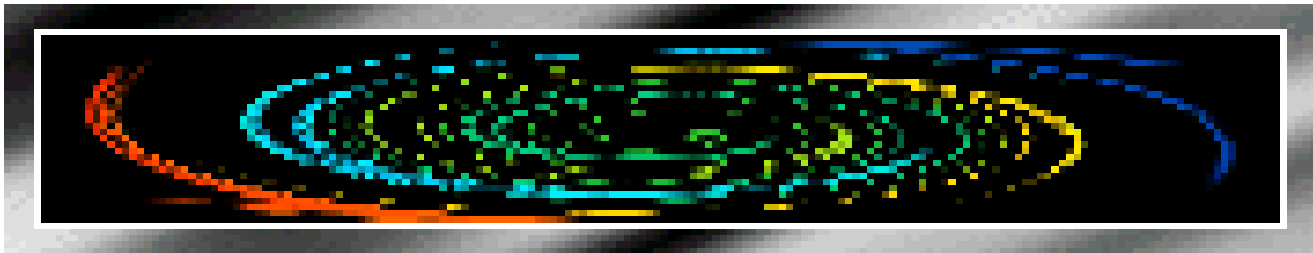
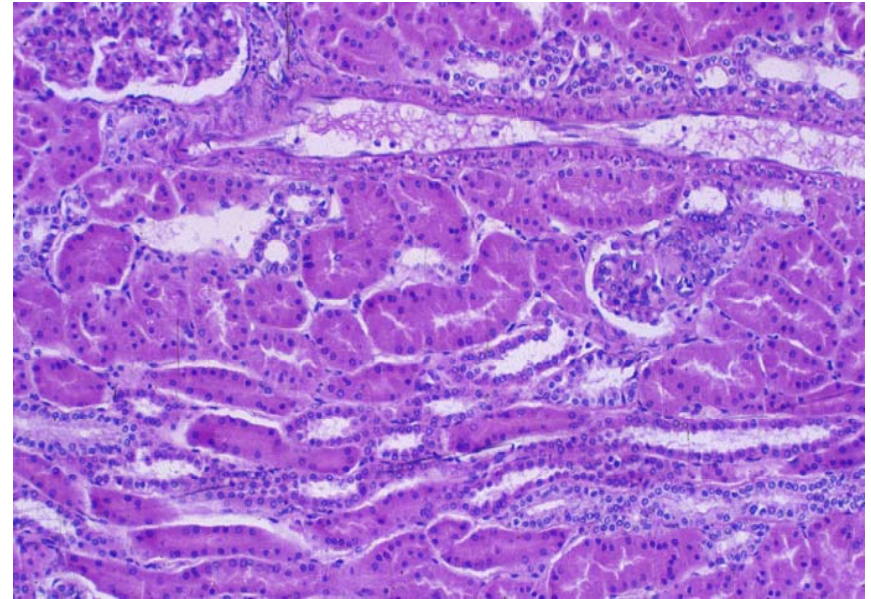


Histology and Embryology



Chapter 1 Introduction and Cell	Chapter 11 Digestive Tract
Chapter 2 Epithelial tissue	Chapter 12 Digestive Gland
Chapter 3 Connective Tissue	Chapter 13 Respiratory System
Chapter 4 Blood	<u>Chapter 14 Urinary System</u>
Chapter 5 Cartilage and Bone	Chapter 15 Endocrine System
Chapter 6 Muscle Tissue	Chapter 16 Sense Organ
Chapter 7 Nerve Tissue	Chapter 17 Male Reproduction
Chapter 8 Circulatory System	Chapter 18 Female Reproduction
Chapter 9 Immune System	Chapter 19 Embryology 1
Chapter 10 Skin	Chapter 20 Embryology 2

Chapter 14 Urinary System



I、 SLIDES

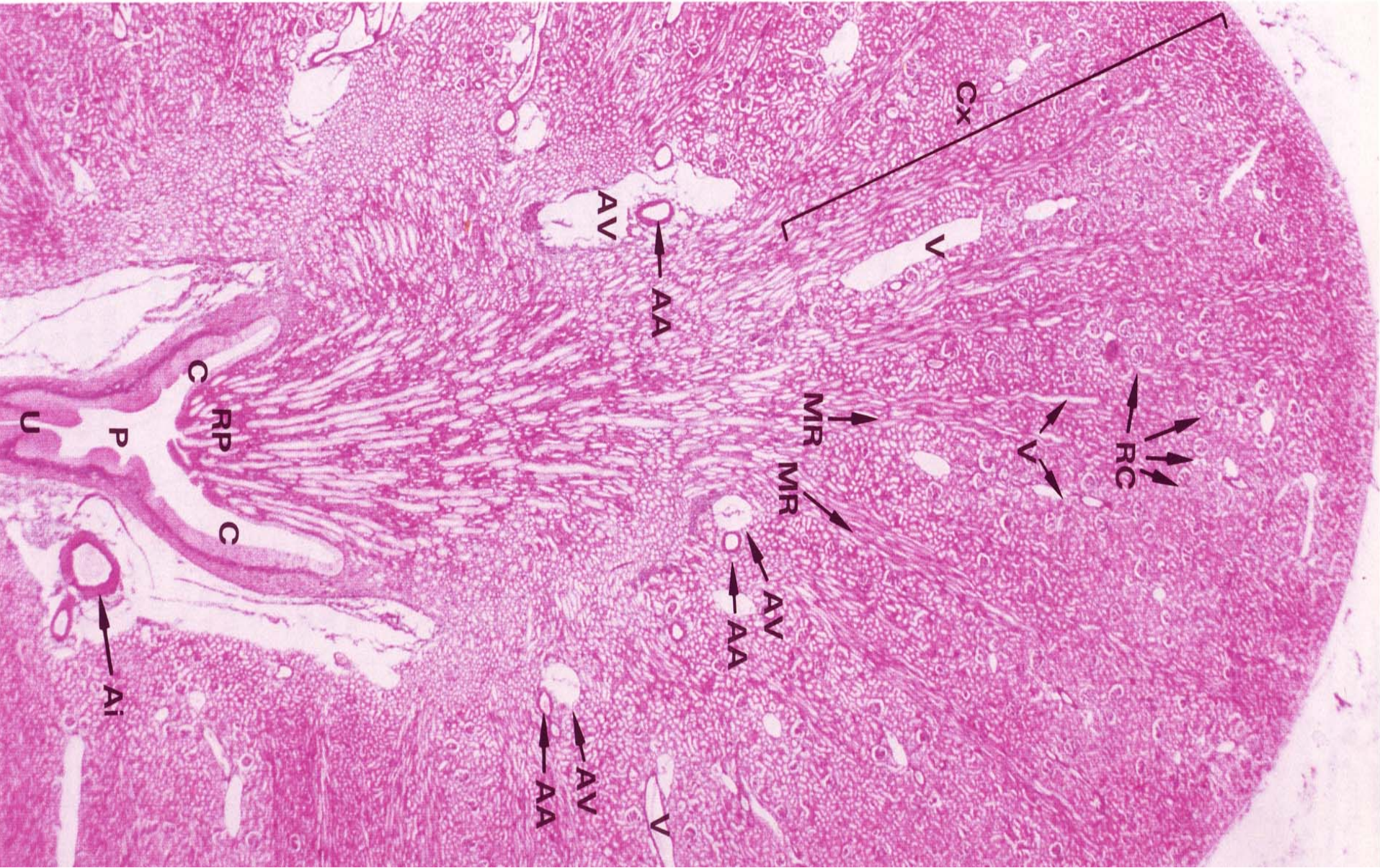
II、 OBSERVE SPECIMEN

NO.82 KIDNEY

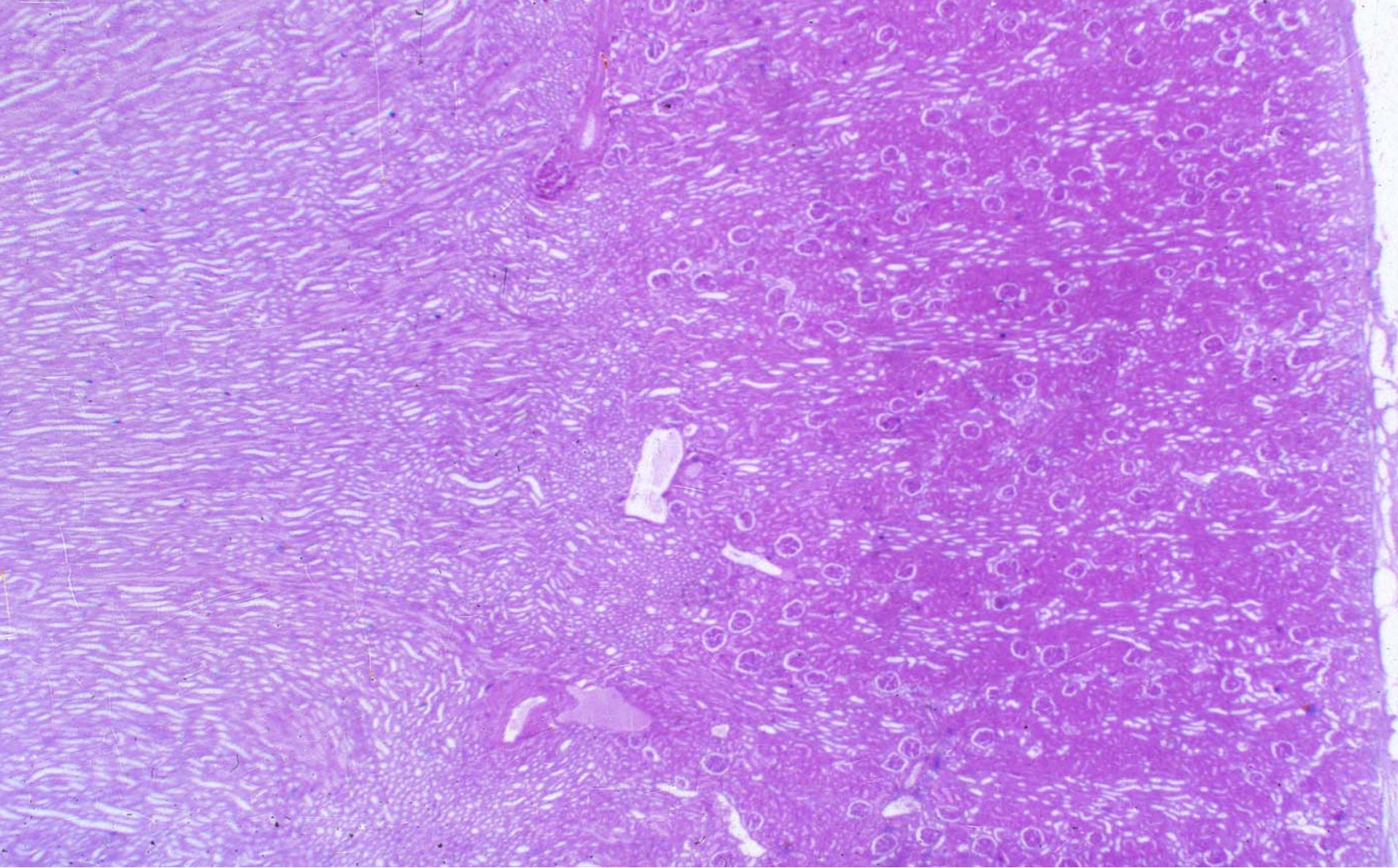
NO.83 JUXTAGLOMERULAR CELL

III、 EM PHOTOGRAPH: 52----58

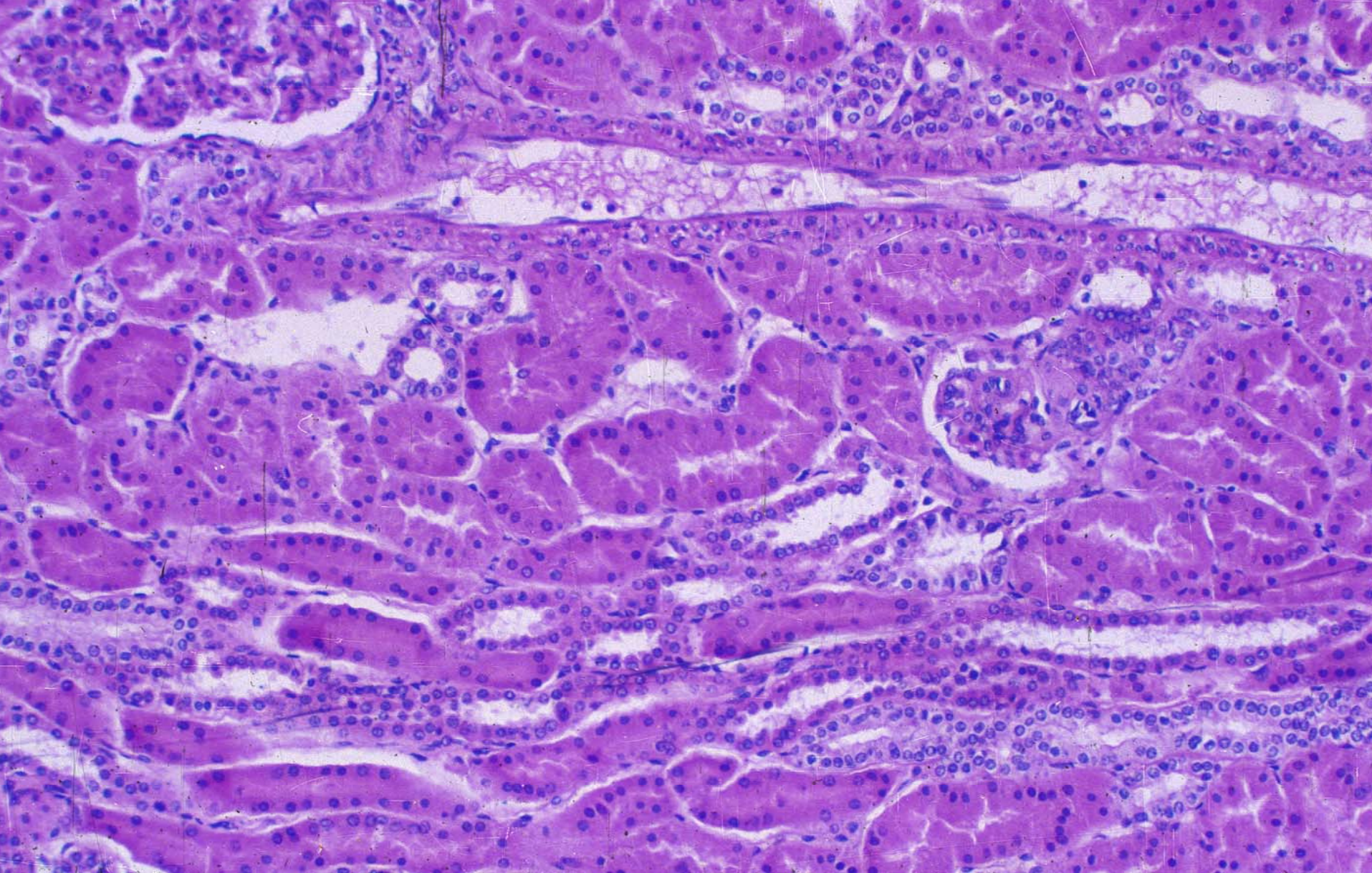
IV、 SUMMARY



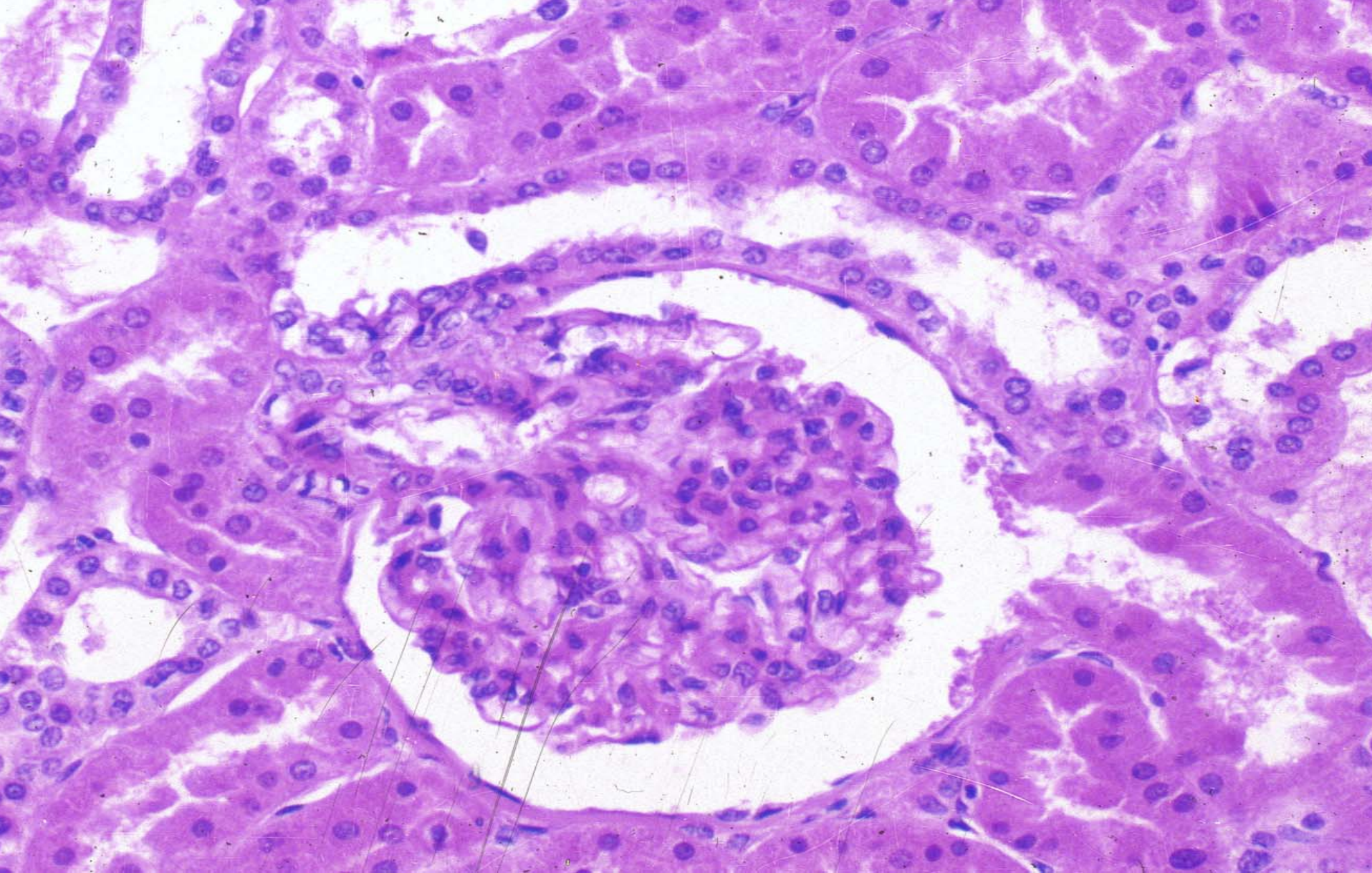
kidney



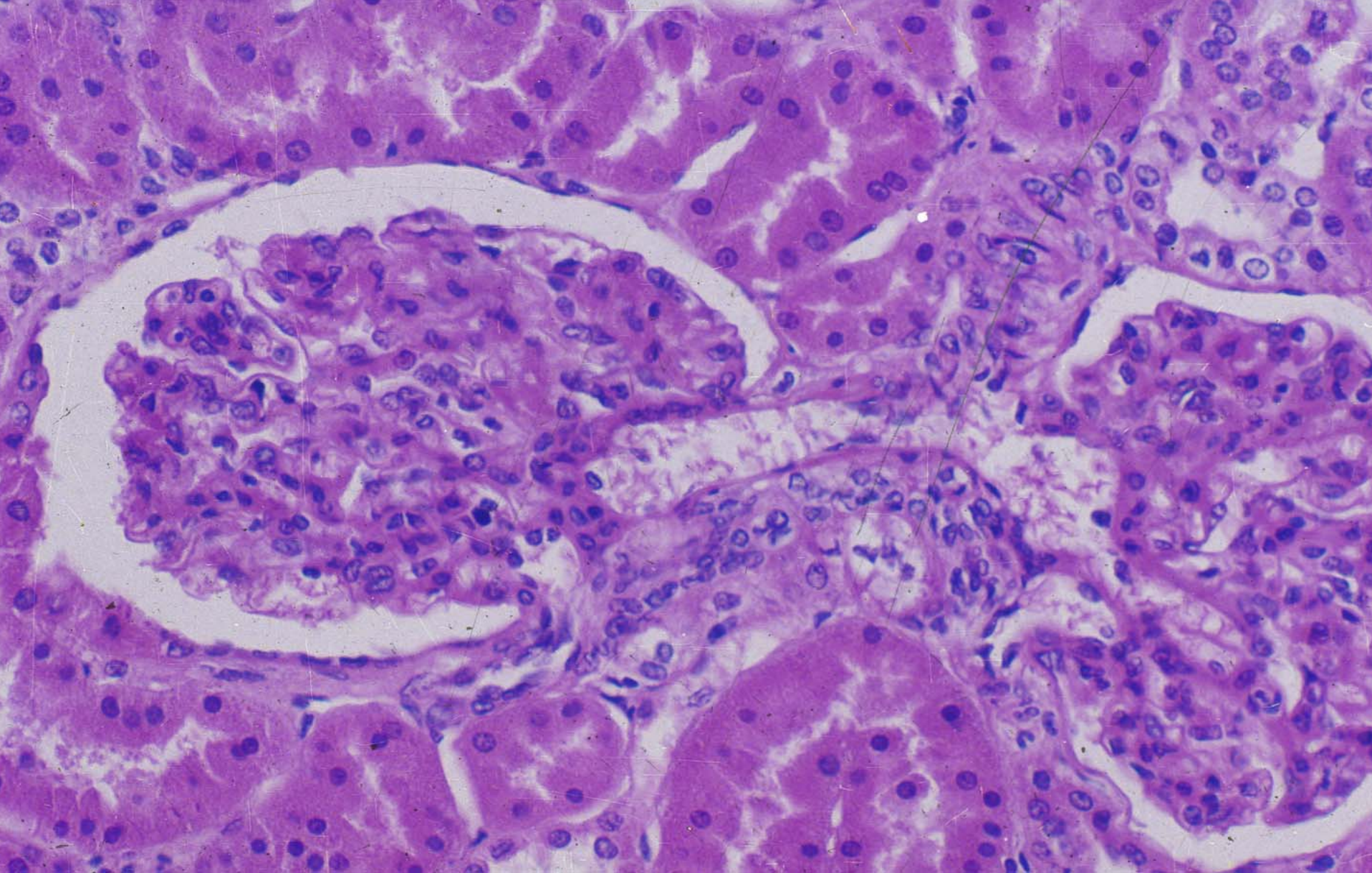
kidney



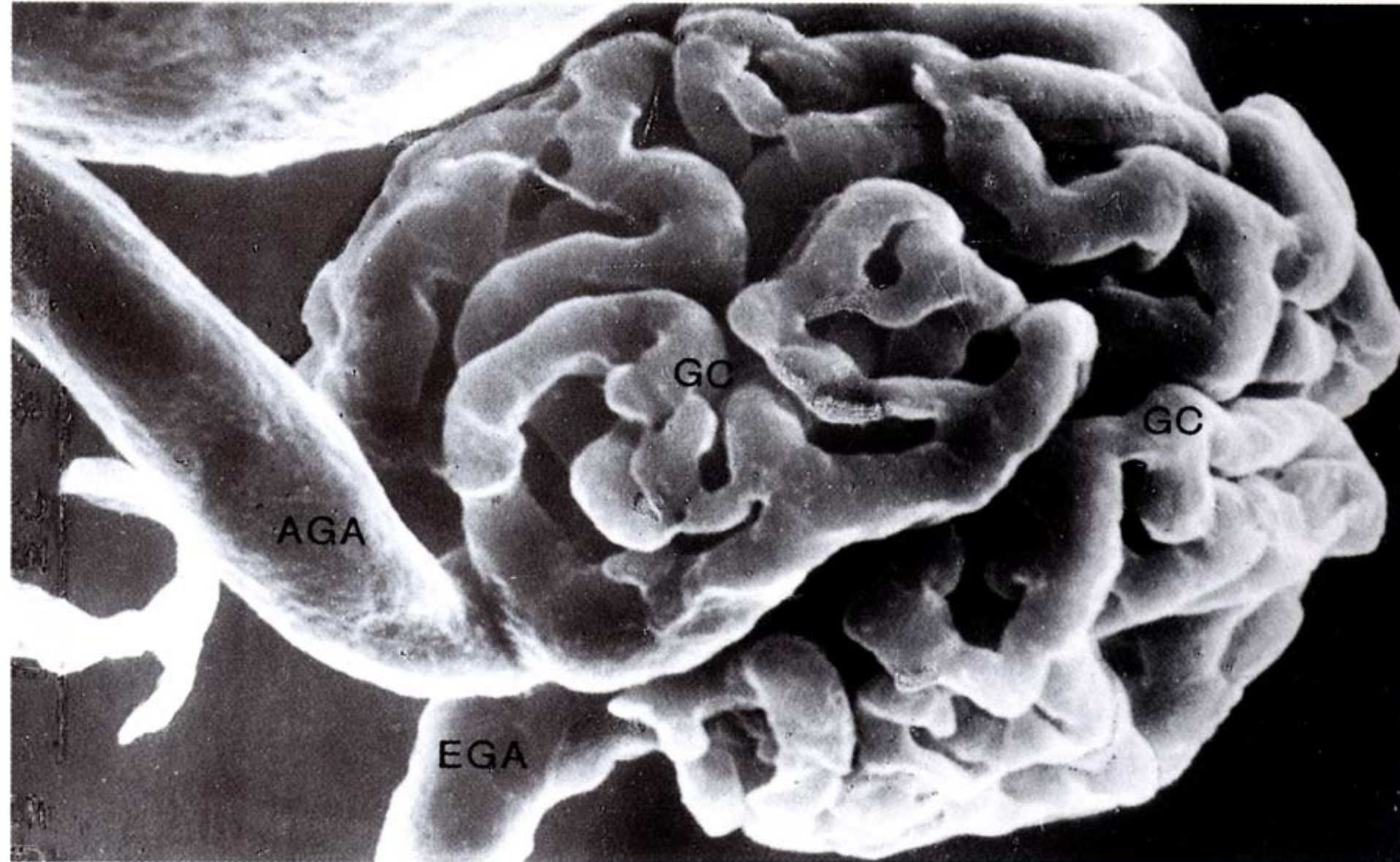
cortex of kidney



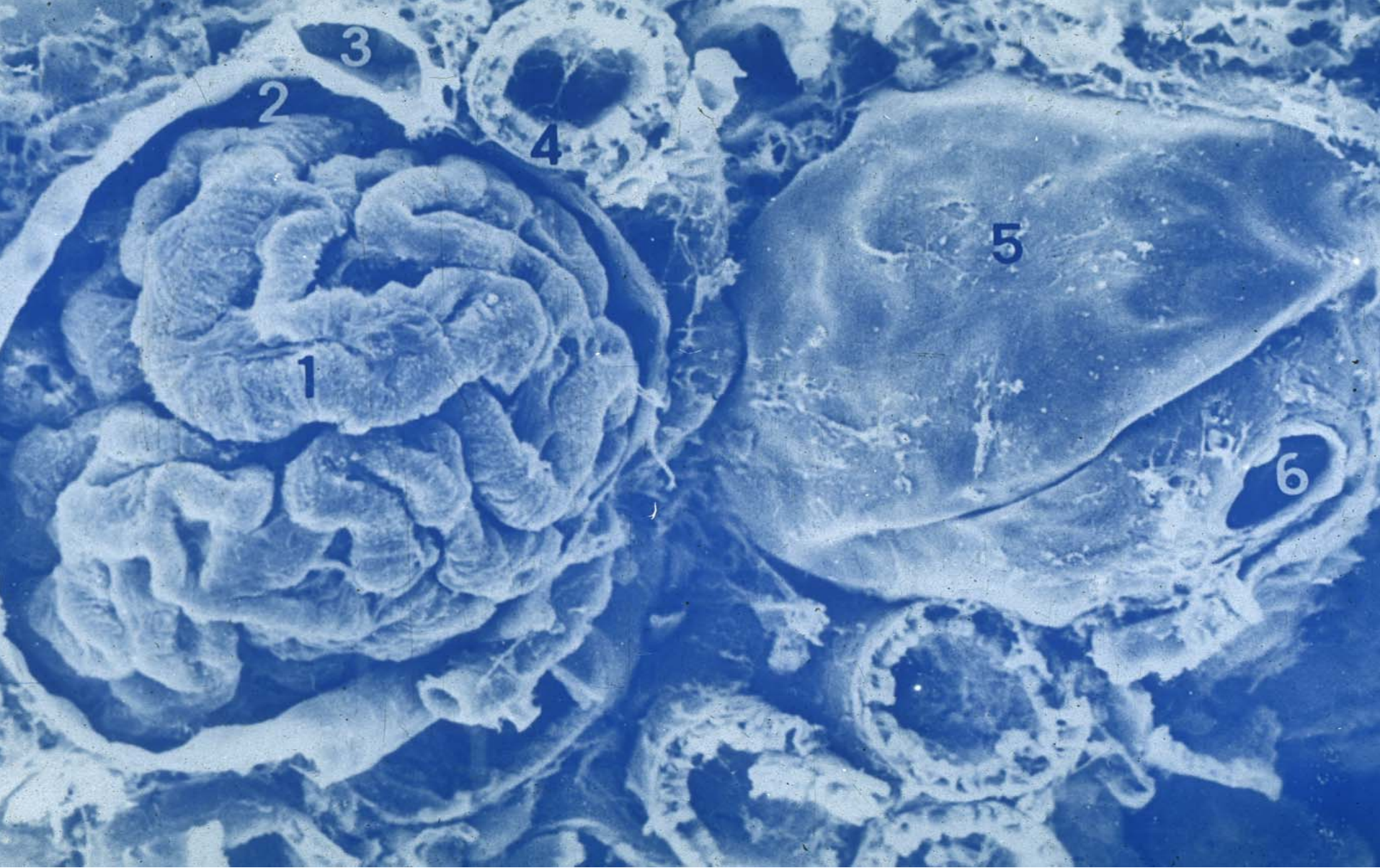
renal corpuscle



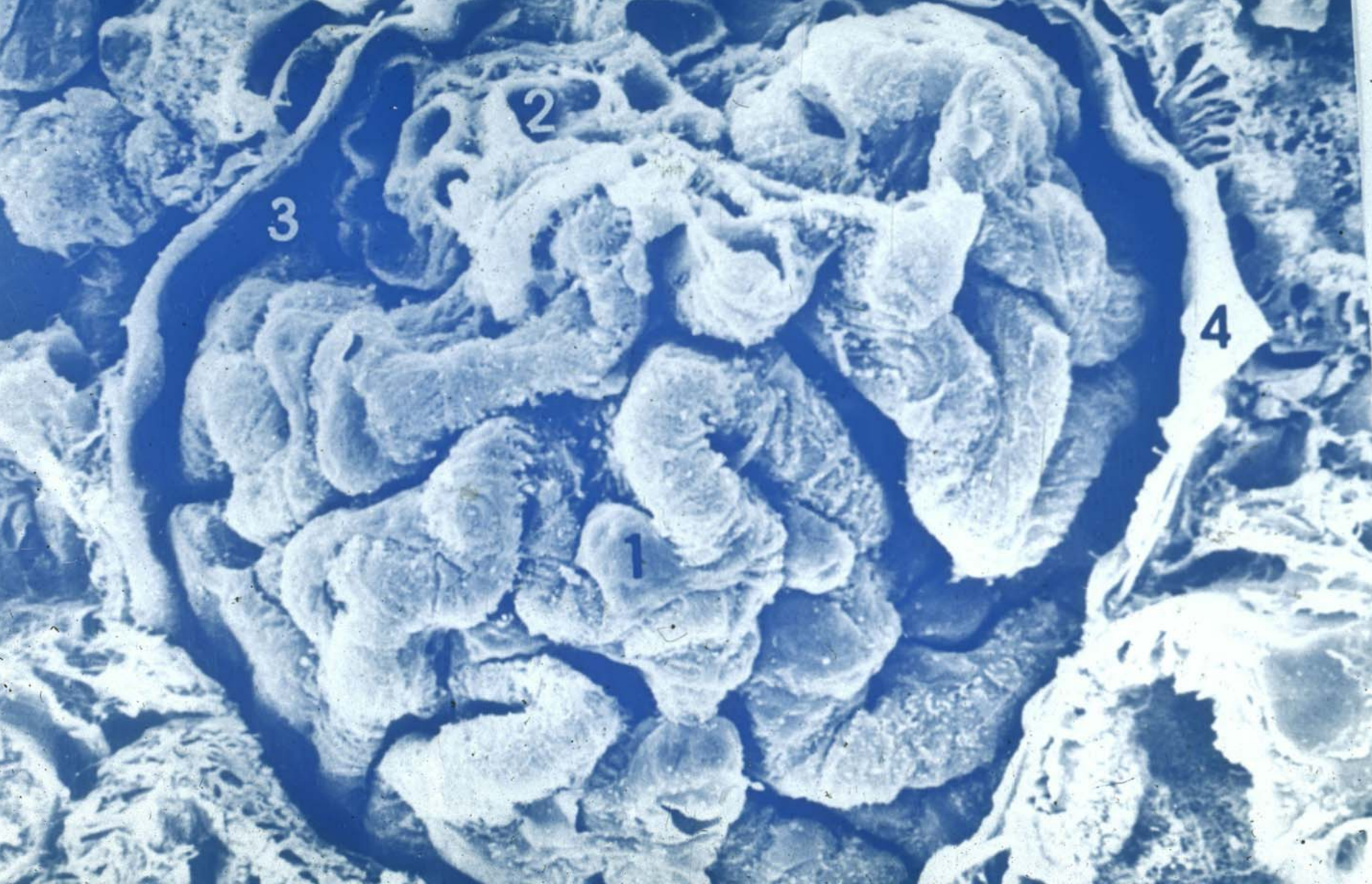
renal corpuscle



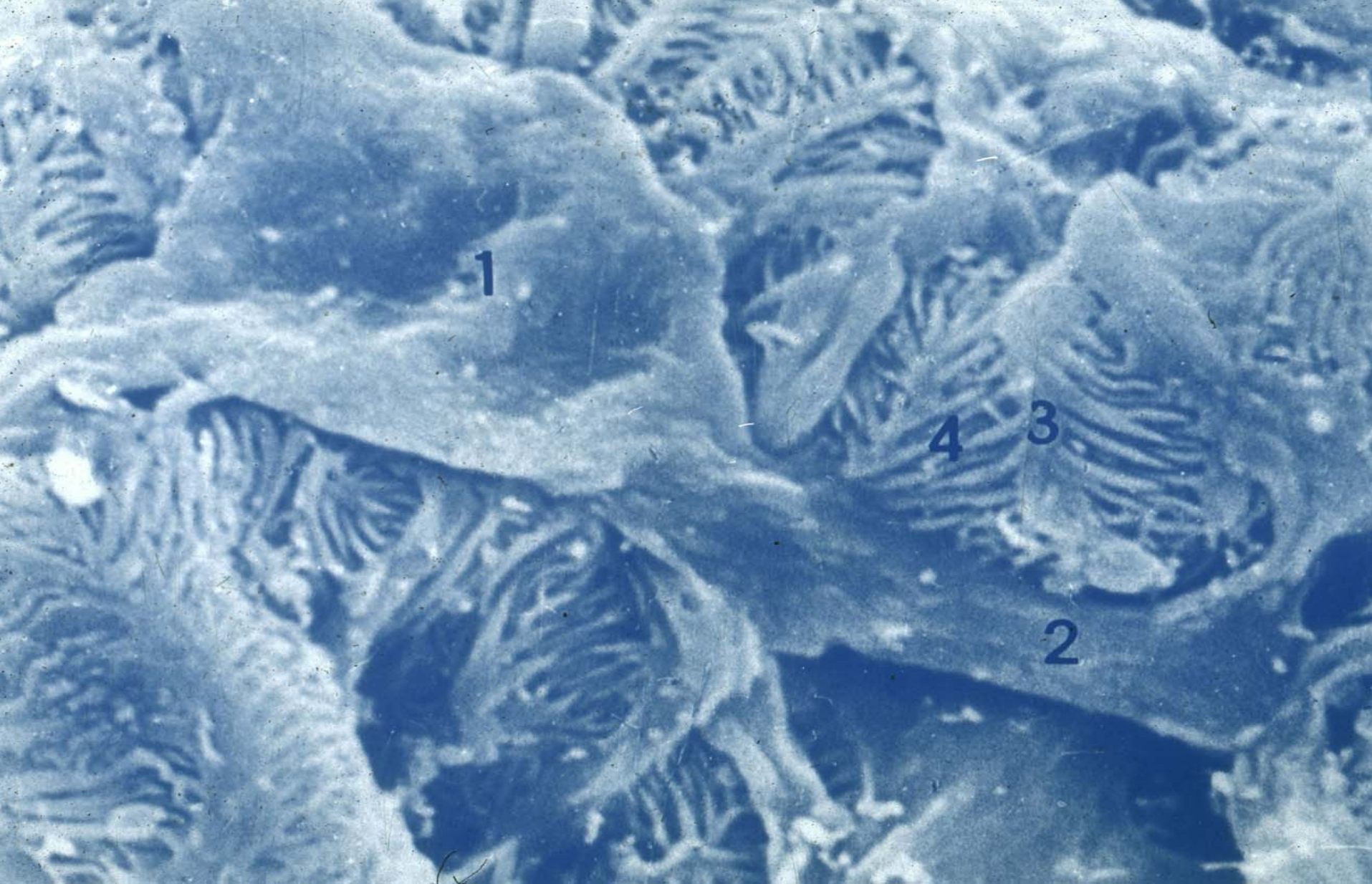
renal corpuscle



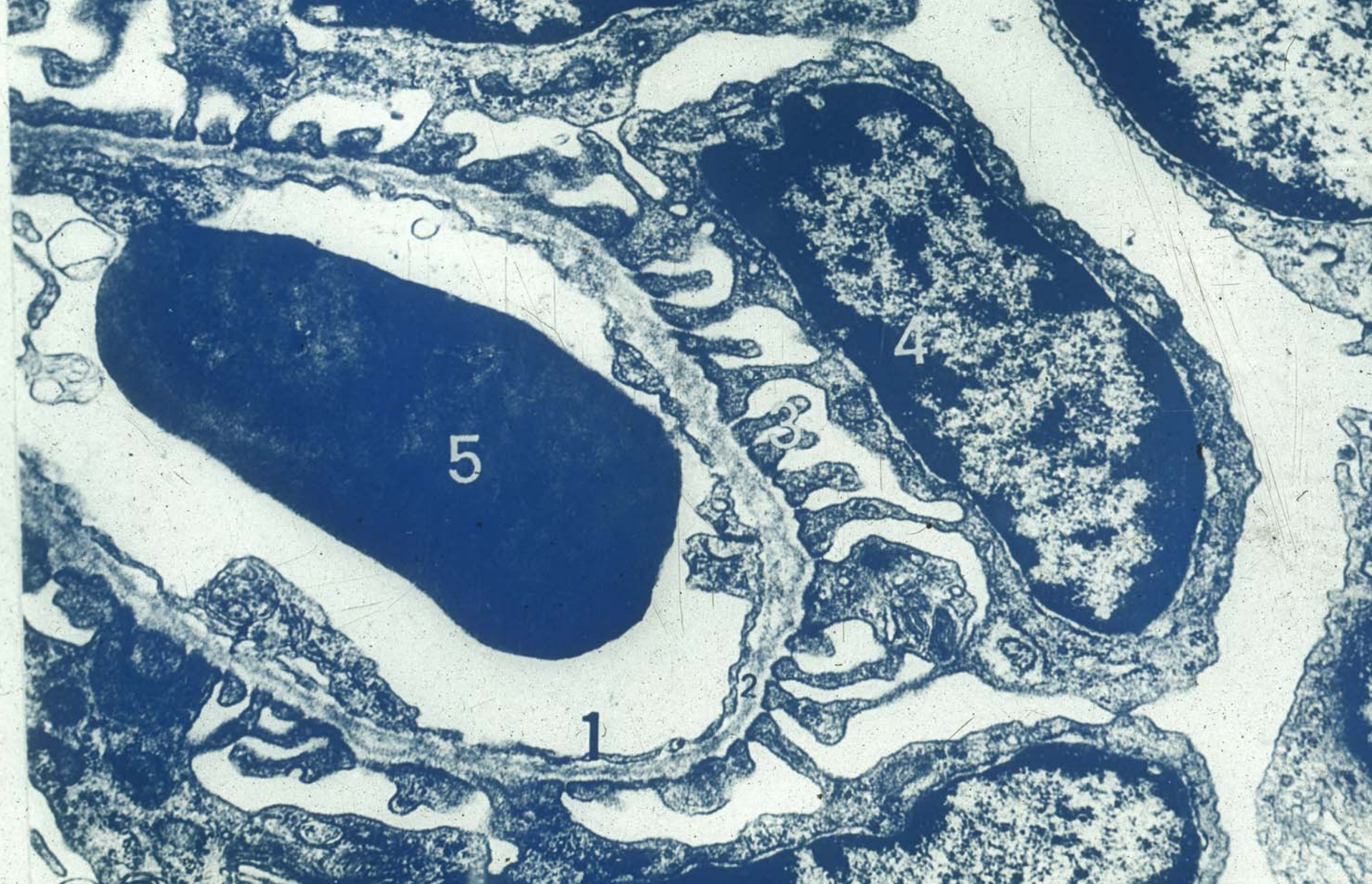
renal corpuscle



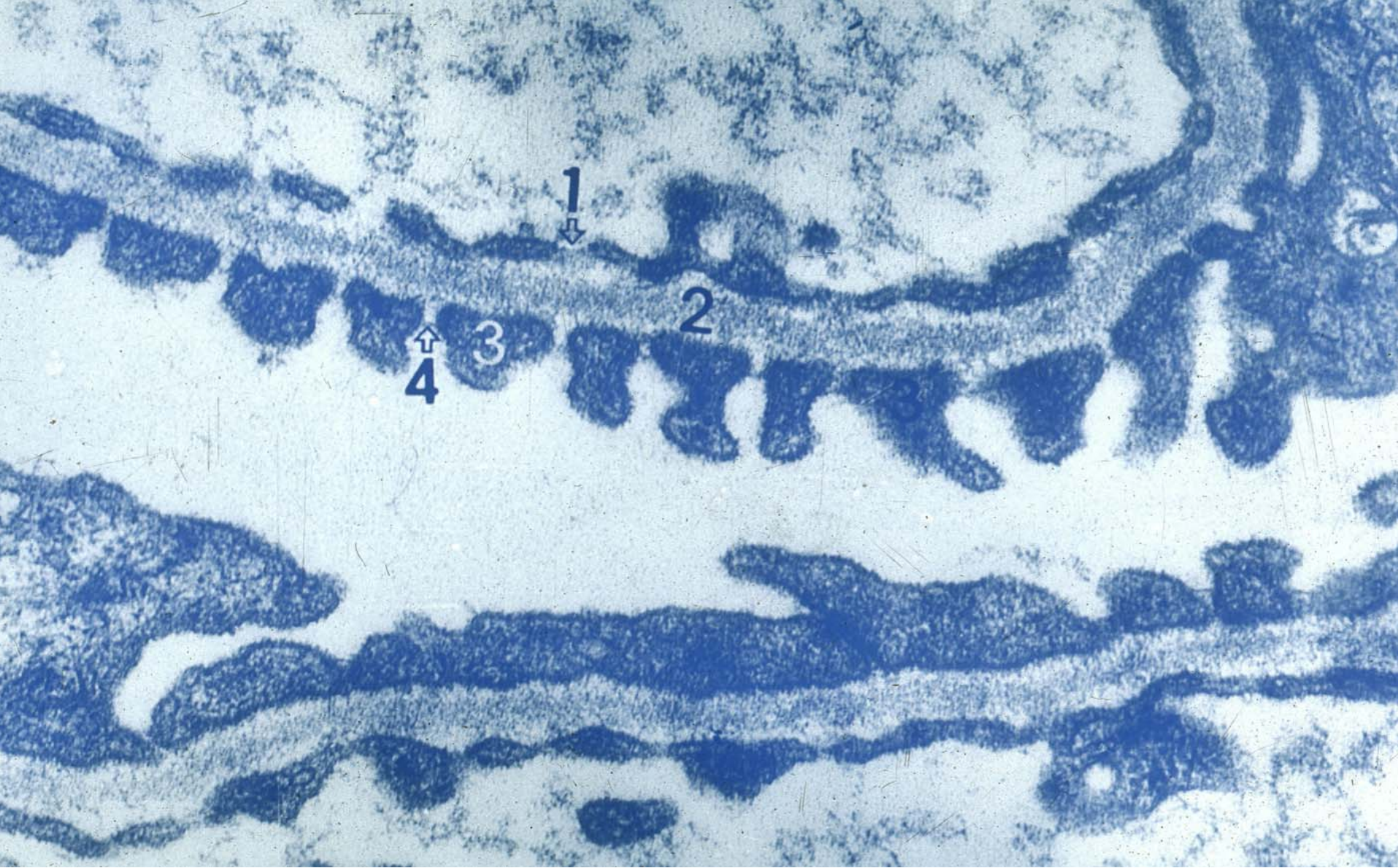
renal corpuscle



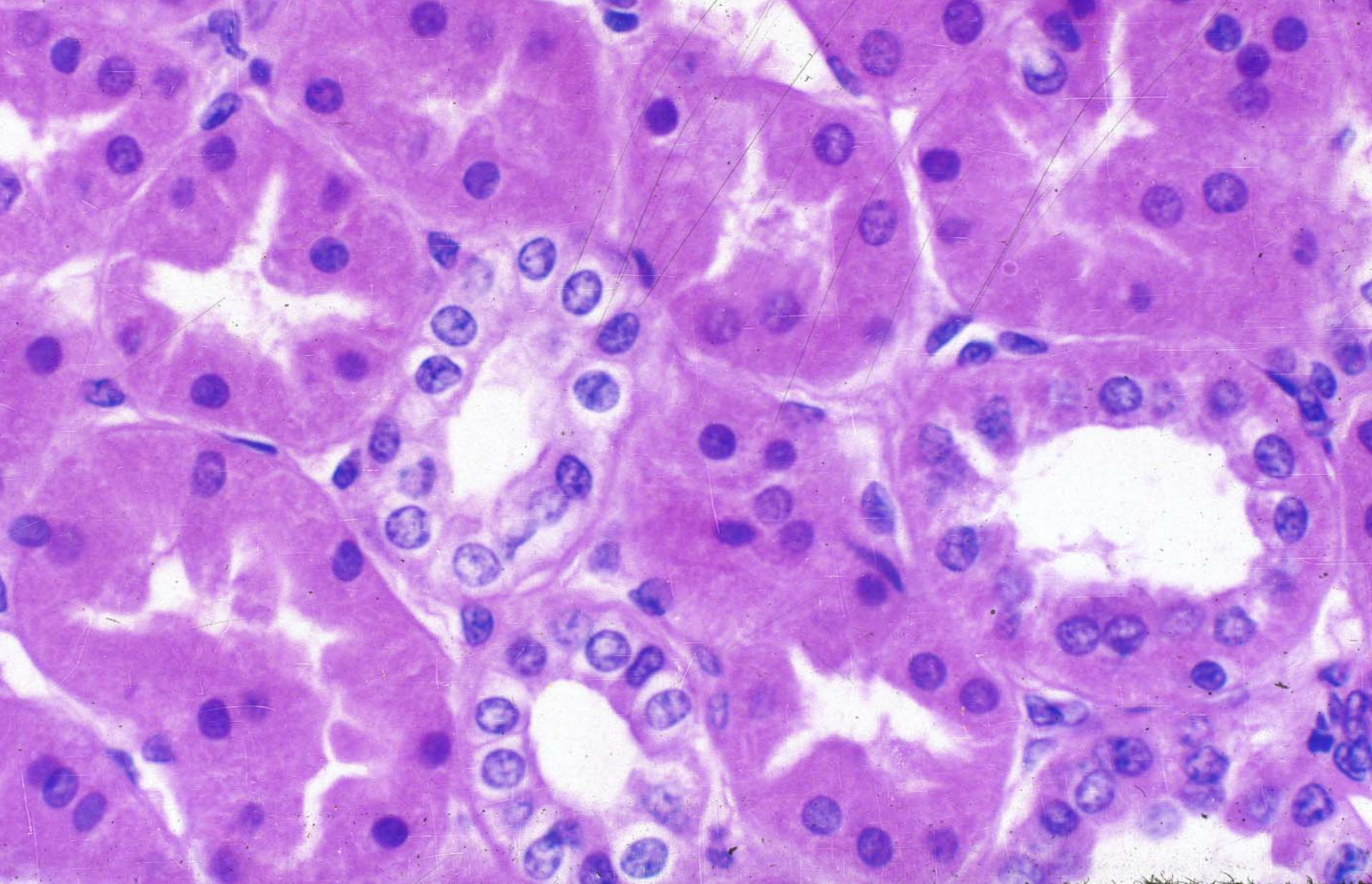
podocyte



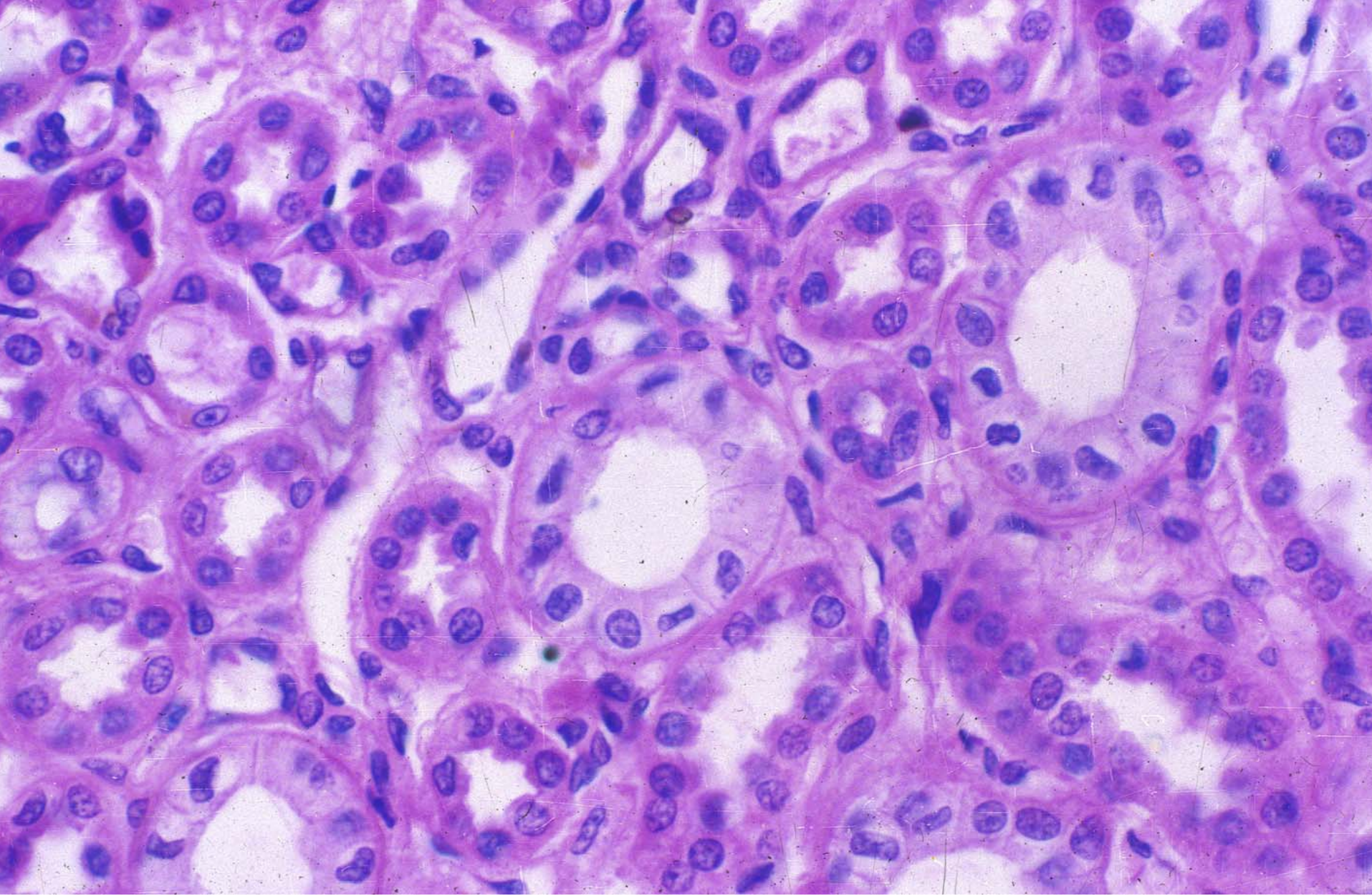
filtration membrane



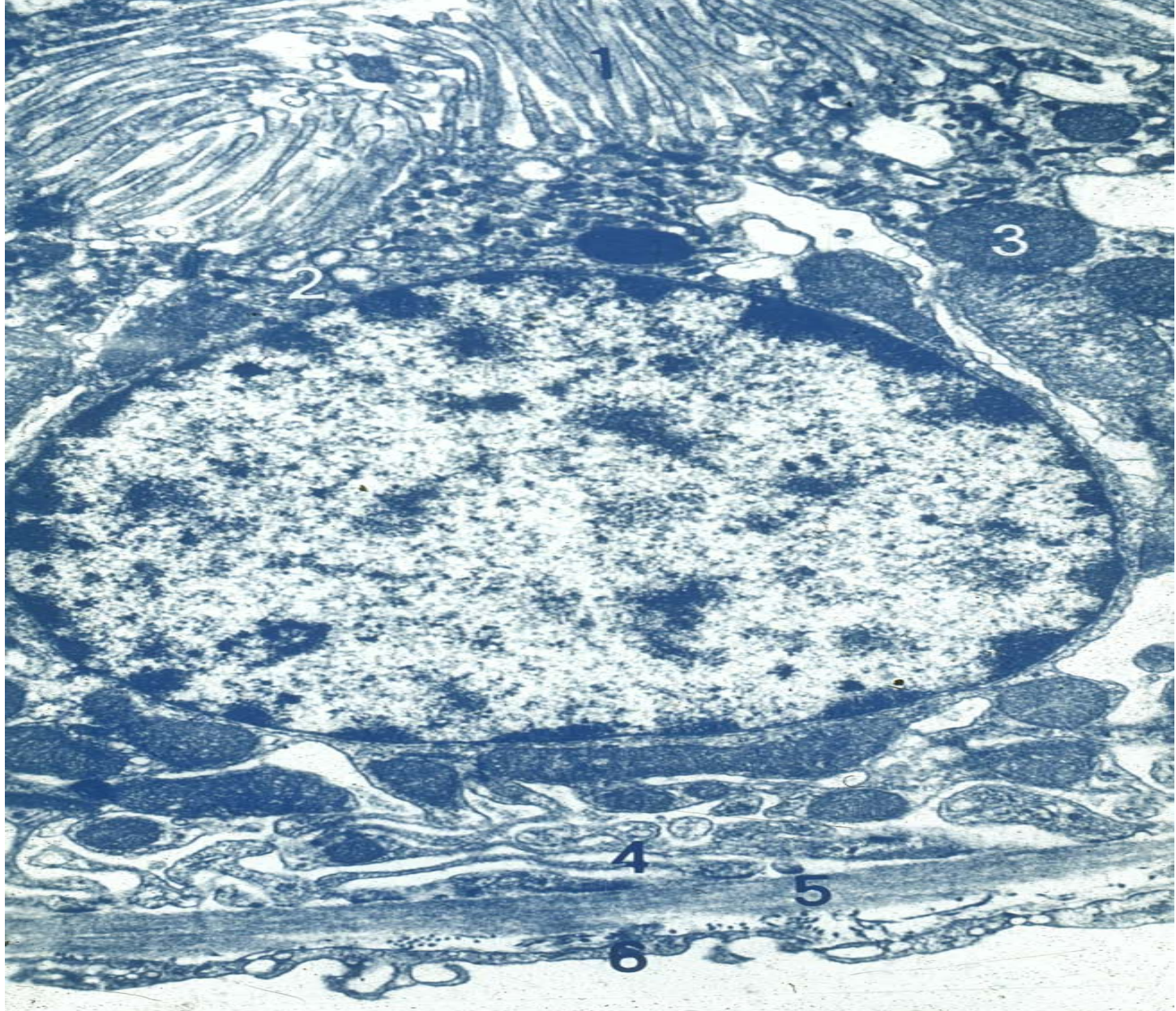
filtration membrane



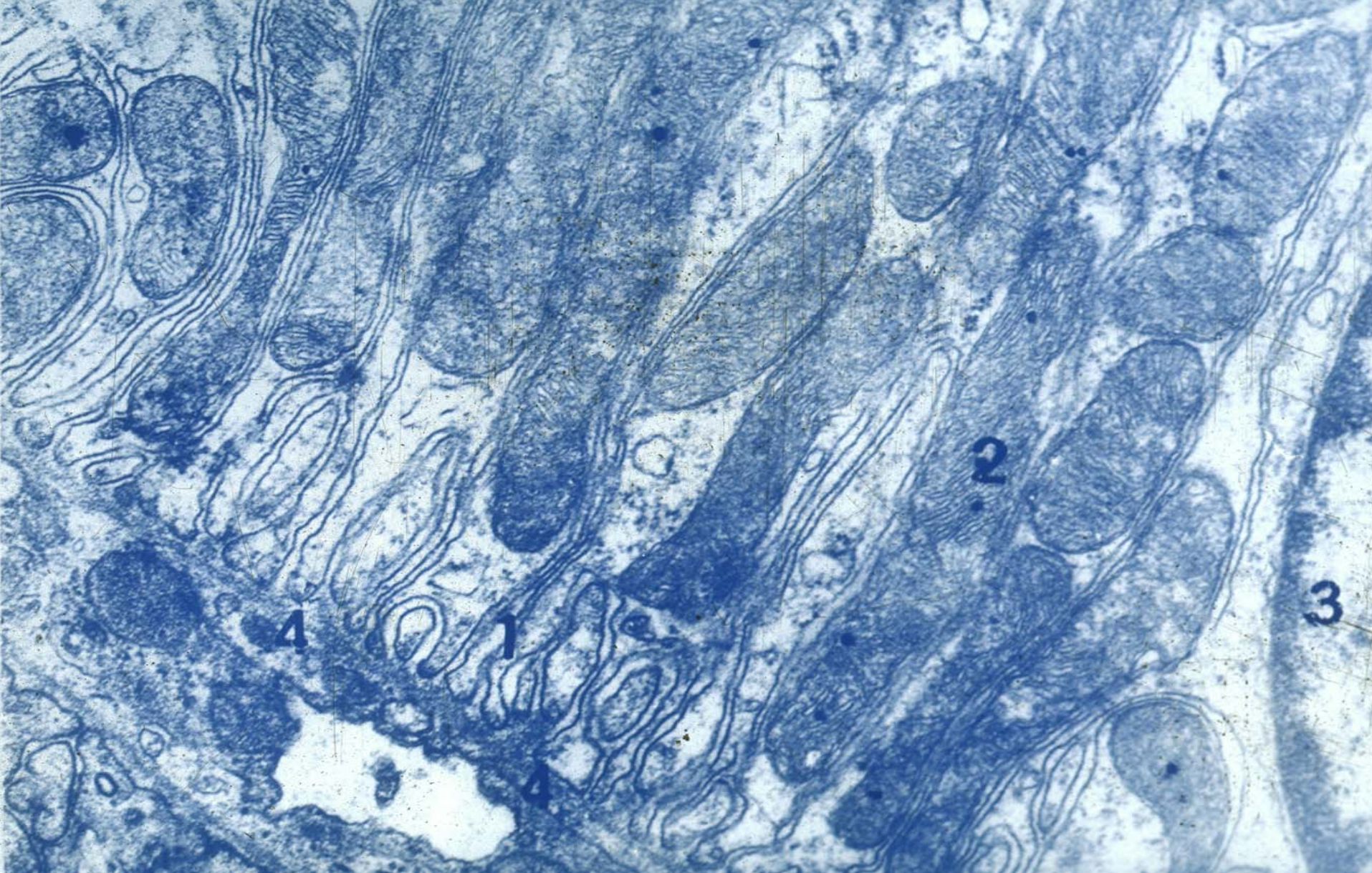
proximal convoluted tubule



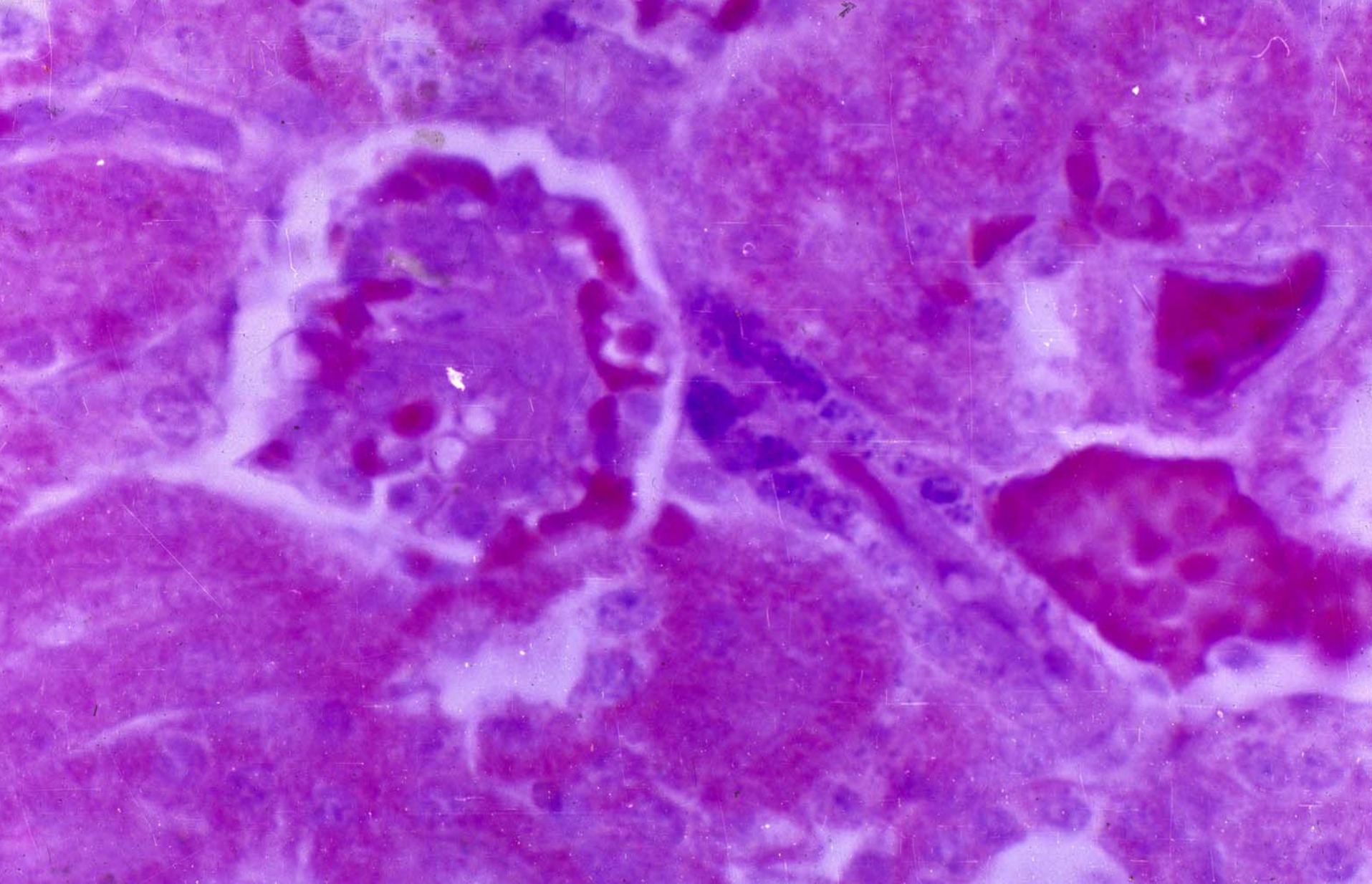
medulla of kidney



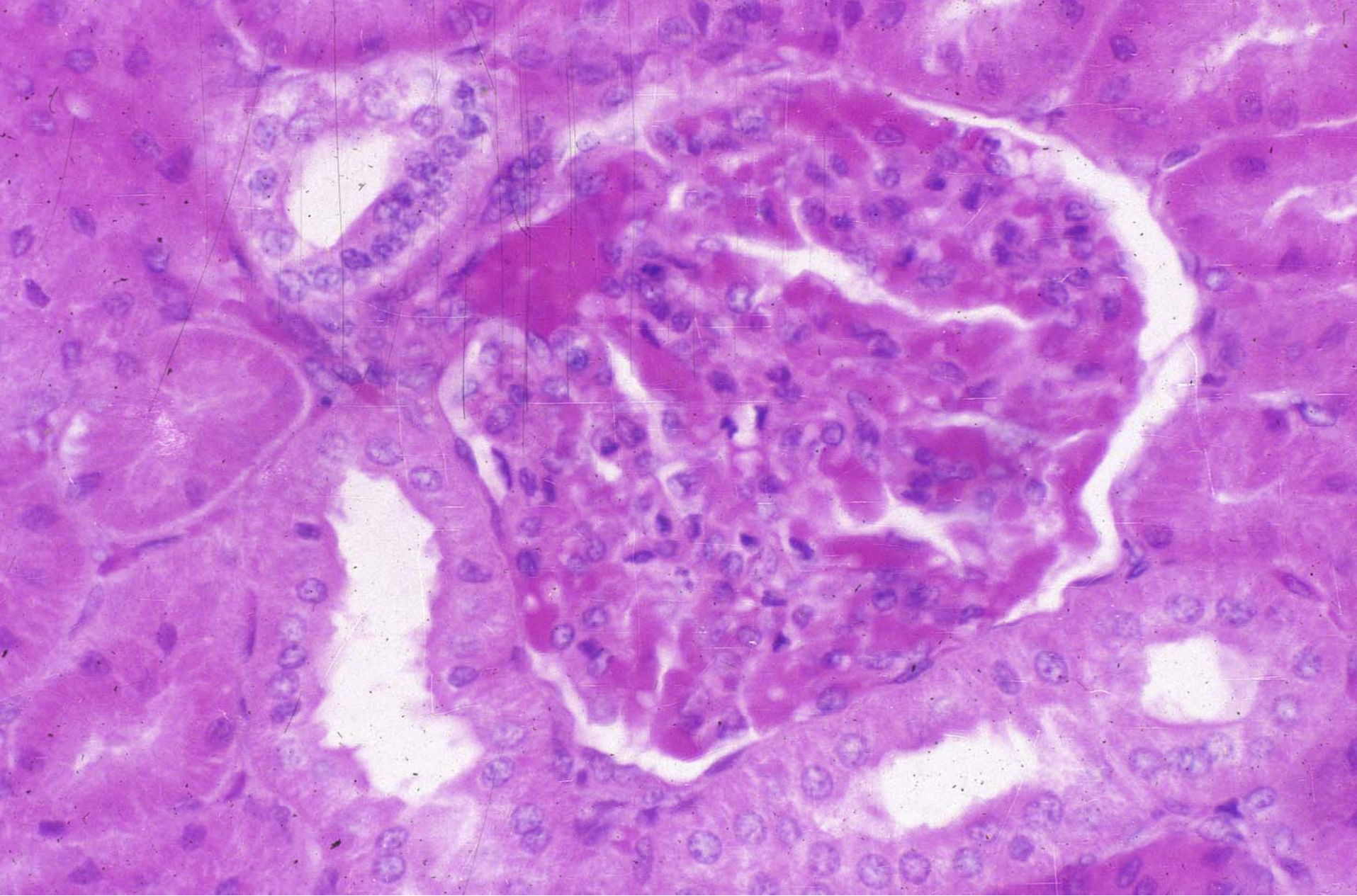
proximal convoluted tubule



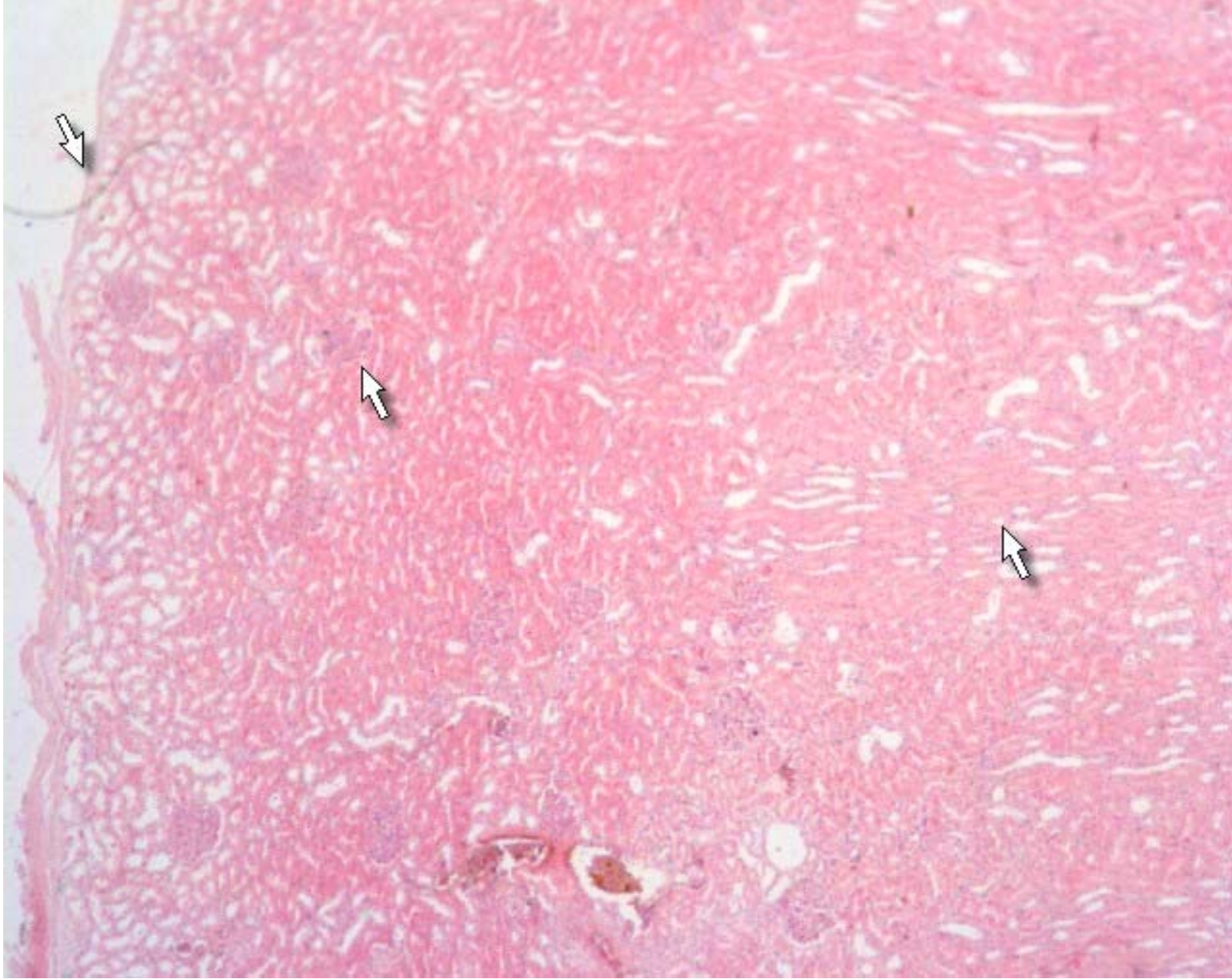
plasma membrane infolding



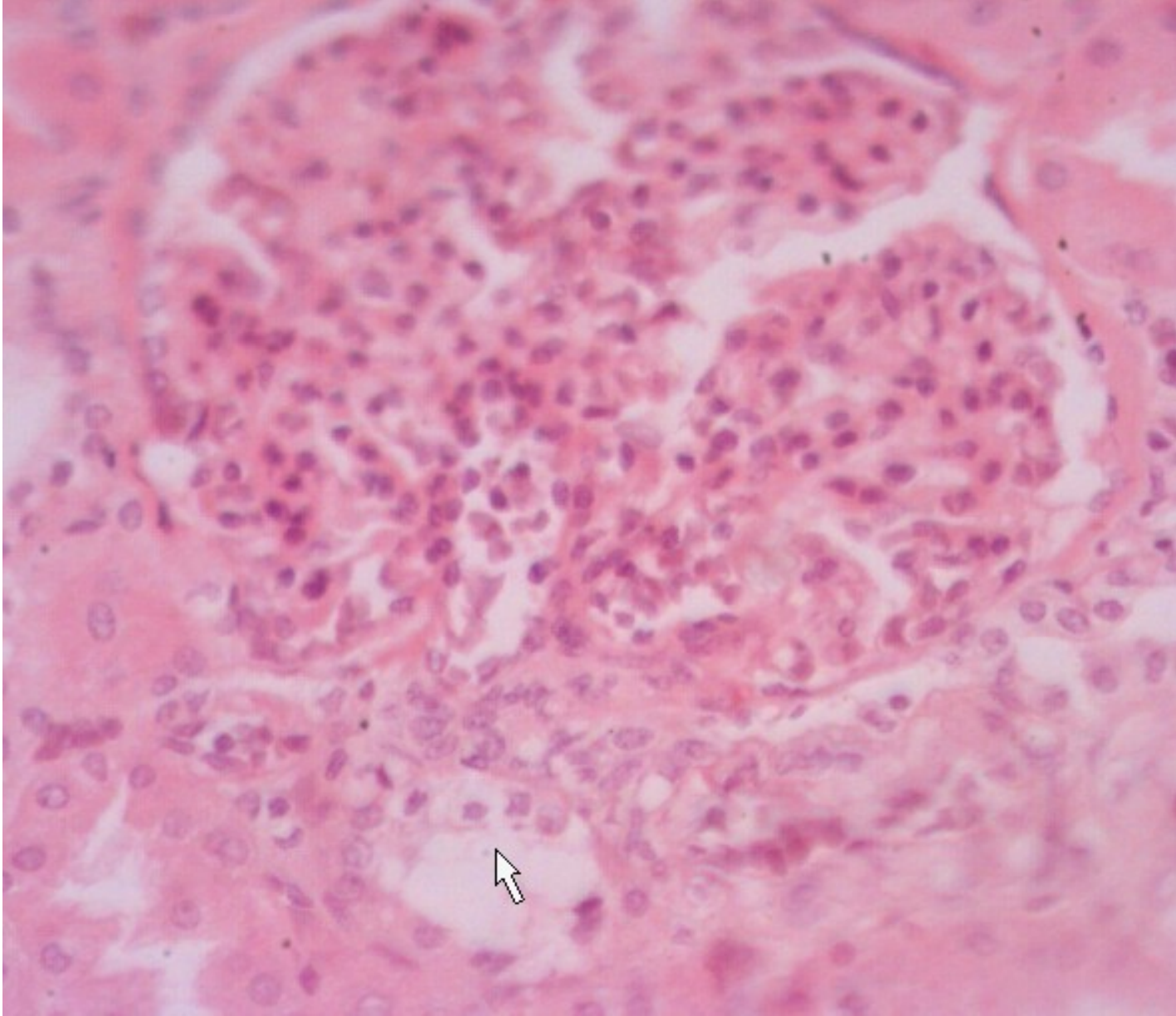
juxtaglomerular cell



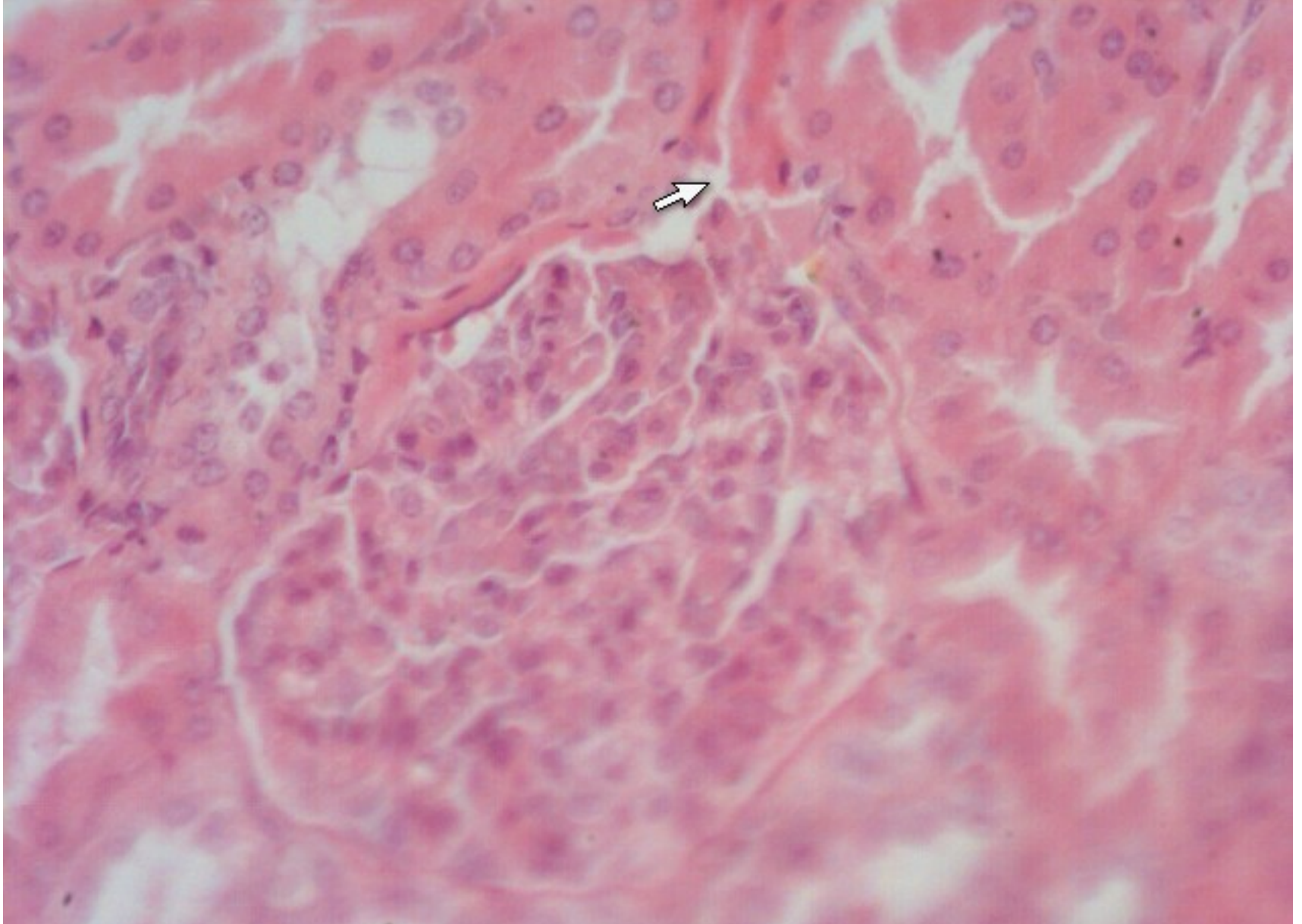
macula densa



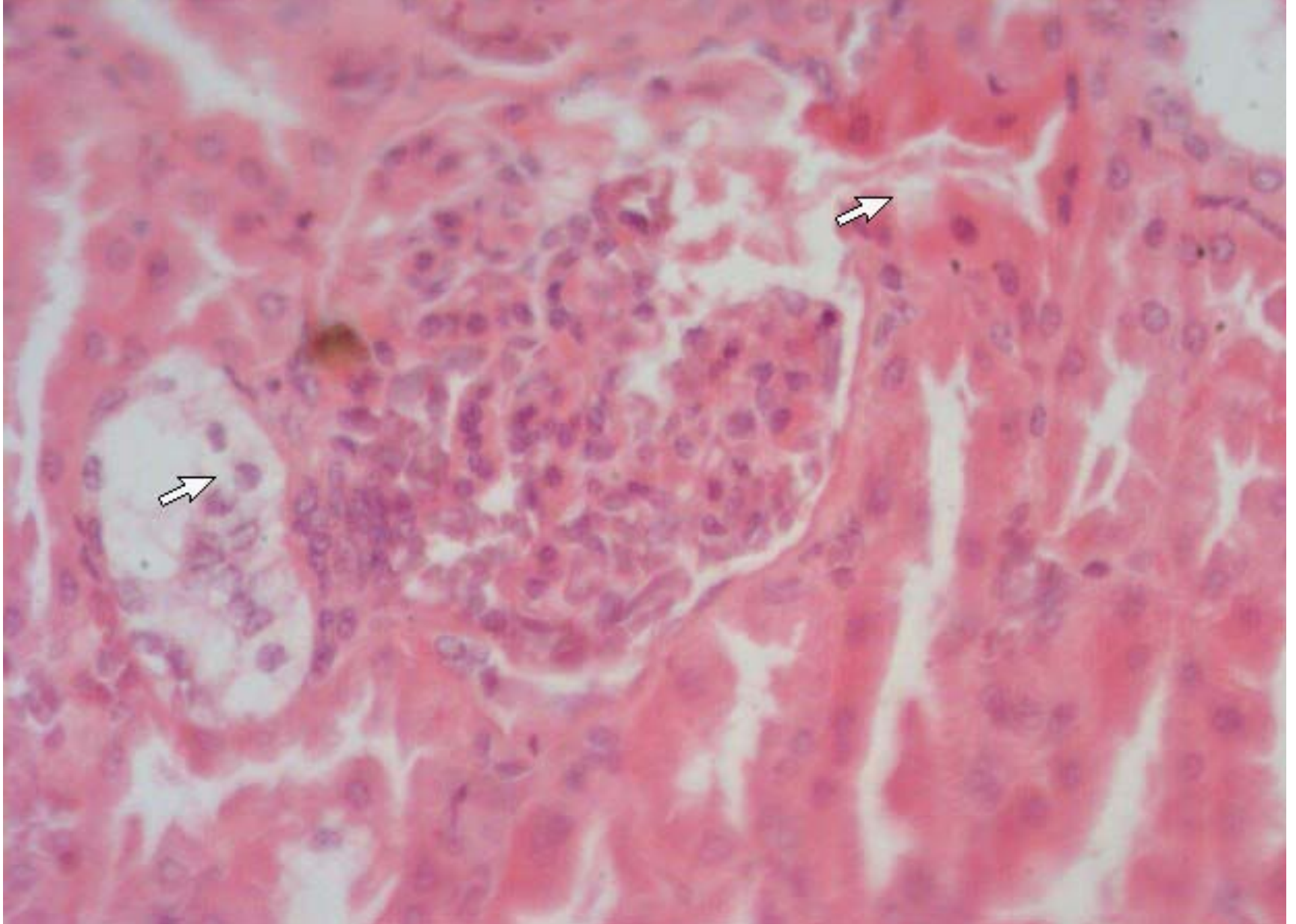
cortex and medulla of kidney



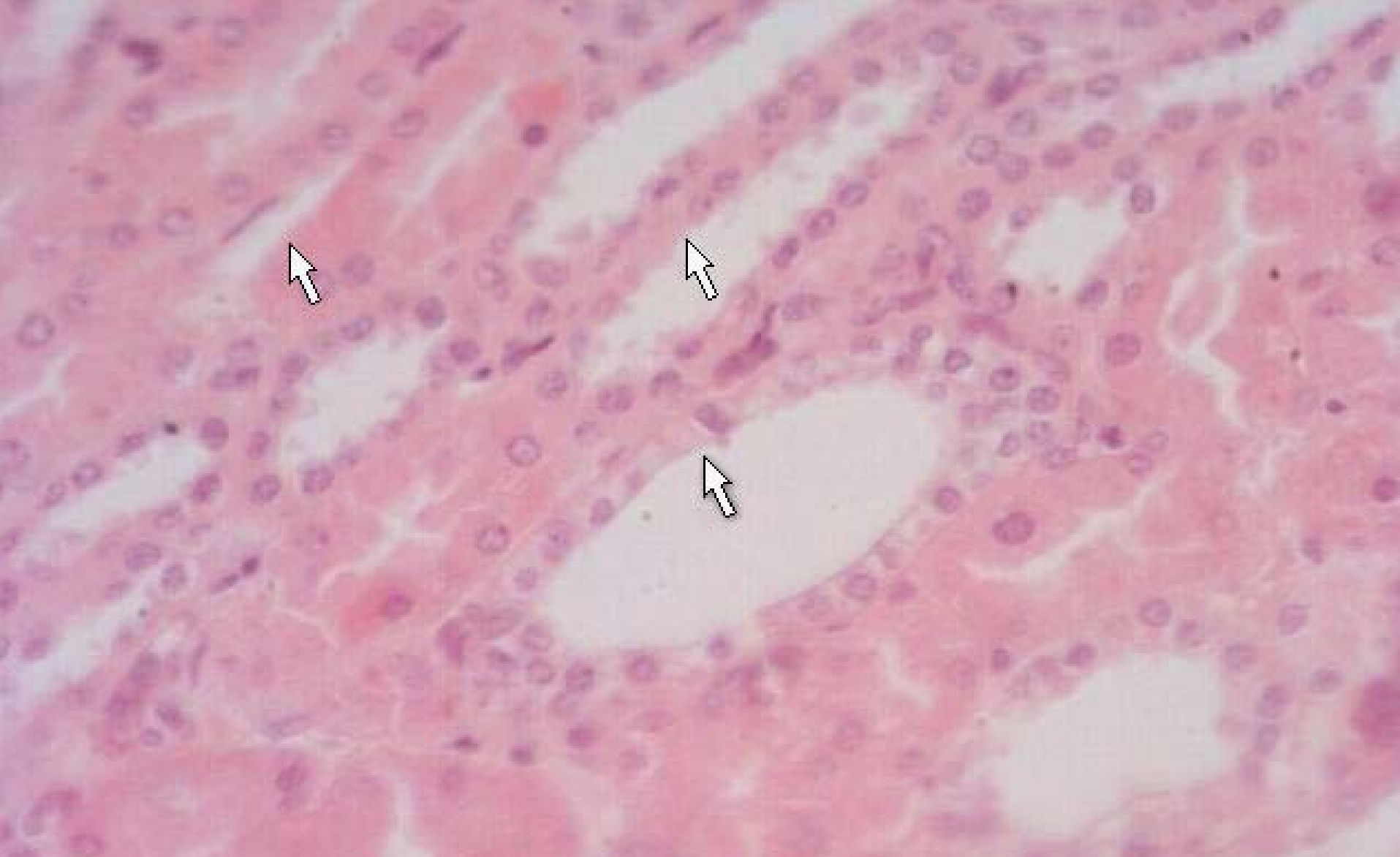
renal corpuscle



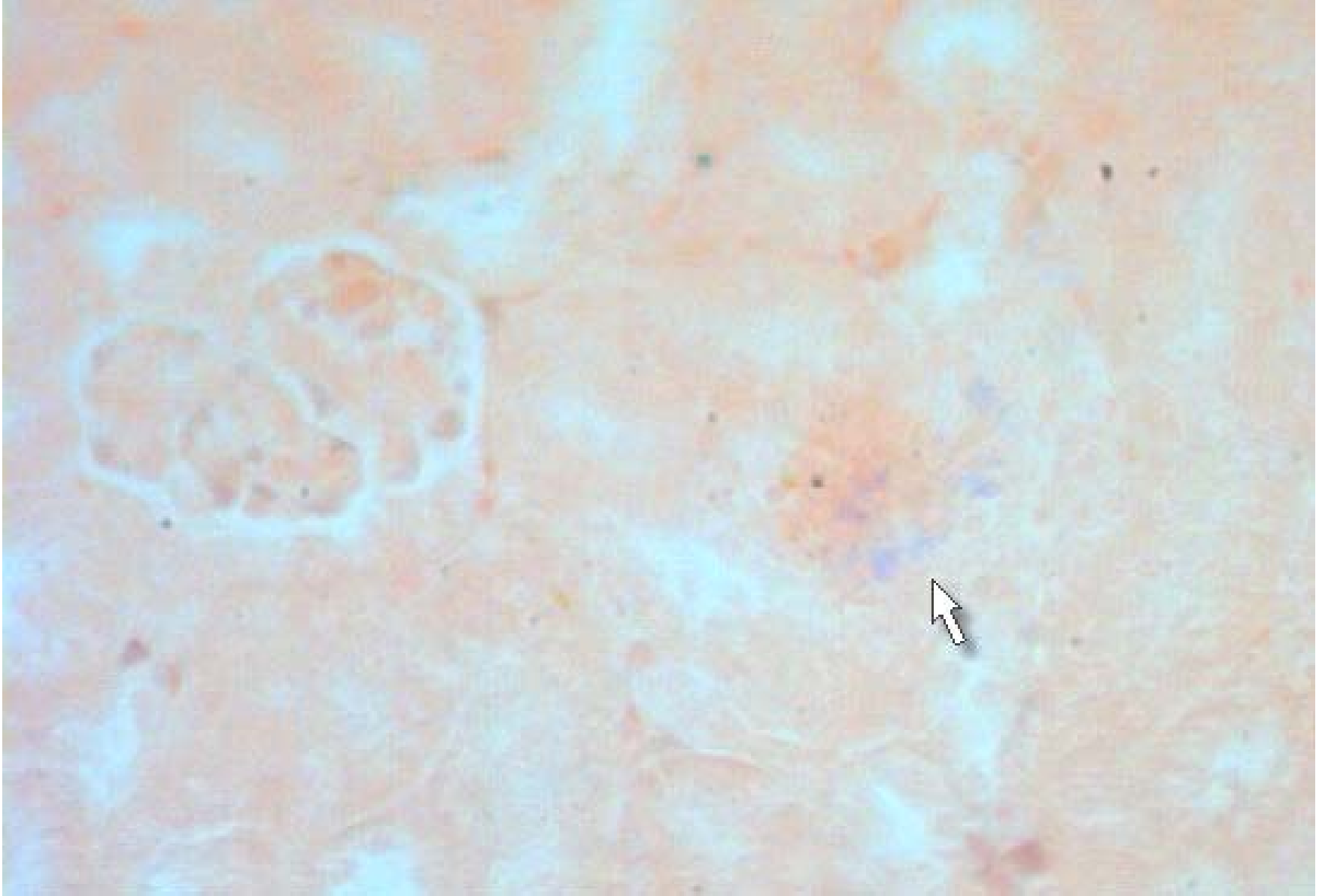
cortical labyrinth



renal corpuscle



medullary ray



juxtaglomerular cell

SUMMARY

- The light and electron microscope's structure、 function and distribution of renal tubule 、 collecting tubule and papilla